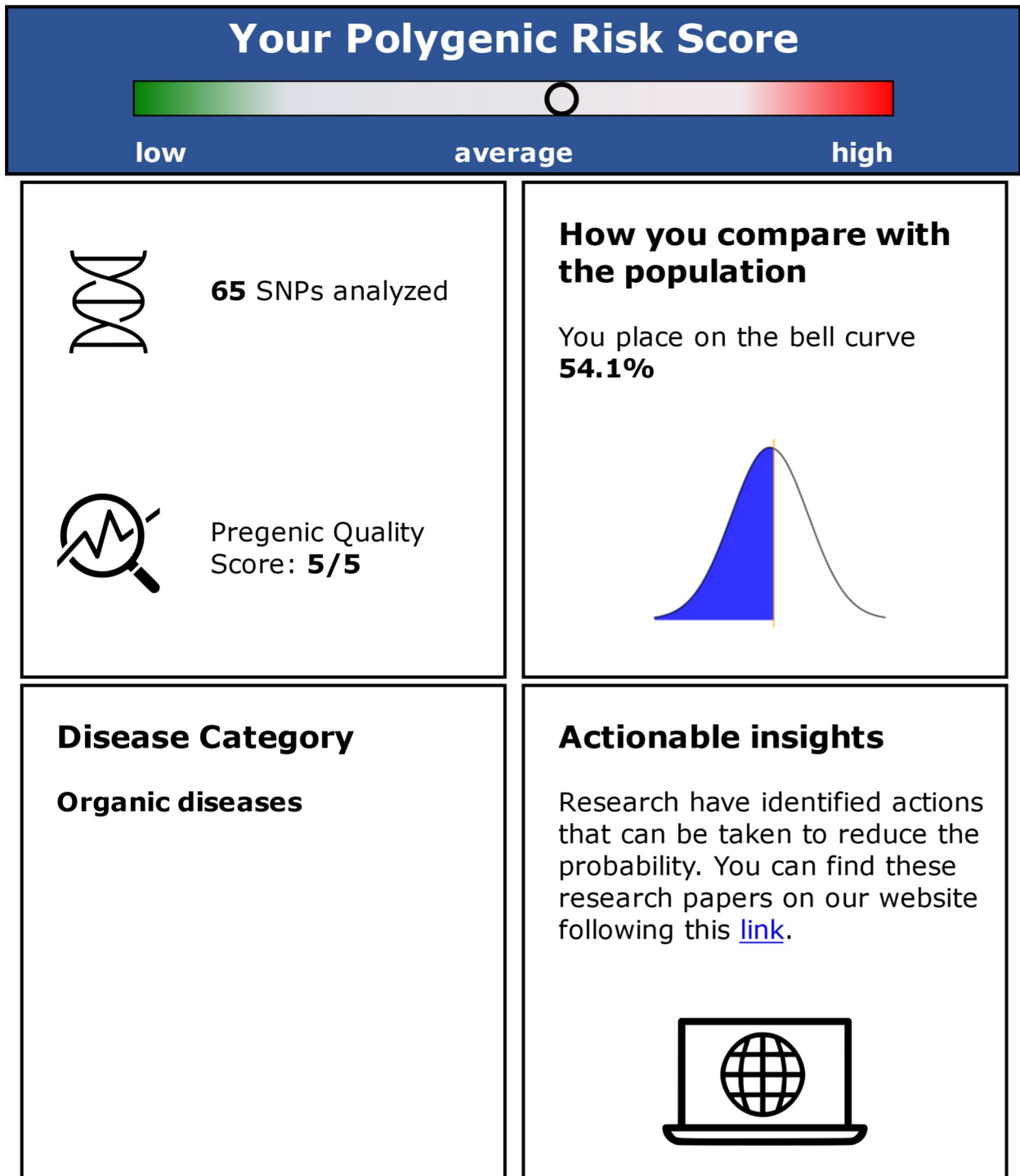


Type 2 diabetes

Definition: A type of diabetes mellitus initially characterized by insulin resistance and hyperinsulinemia and subsequently by glucose intolerance and hyperglycemia.



Here is your detailed view for Type 2 diabetes

RSid	Genotype	Strongest Risk Allele	Gene	Risk Value	Link
rs1513272	GG	C	NR	-0.9189	Pubmed Link
rs1517037	AG	C	NR	-0.9625	Pubmed Link
rs1631619	AA	G	ANKRD30A, PCAT5	4.0000	Pubmed Link
rs1708302	GG	C	JAZF1	0.1000	Pubmed Link
rs1800574	GG	T	HNF1A	0.1400	Pubmed Link
rs34872471	AG	C	TCF7L2	0.3100	Pubmed Link
rs2106294	AA	T	LIMK2	0.7500	Pubmed Link
rs35658696	AA	G	PAM- PPIP5K2	0.1300	Pubmed Link
rs35913461	GG	C	TMEM18	0.0600	Pubmed Link
rs4809369	AA	G	NR	-0.9663	Pubmed Link
rs4976033	AA	G	NR	-0.9749	Pubmed Link
rs2055997	GG	G	NR	-0.9687	Pubmed Link
rs1436955	GG	C	C2CD4B	0.1300	Pubmed Link
rs13024606	GG	T	GRB14, COBLL1	0.0900	Pubmed Link
rs12649012	AA	G	GRSF1, MOB1B	0.0700	Pubmed Link
rs12437434	GG	C	NYNRIN	0.0500	Pubmed Link